



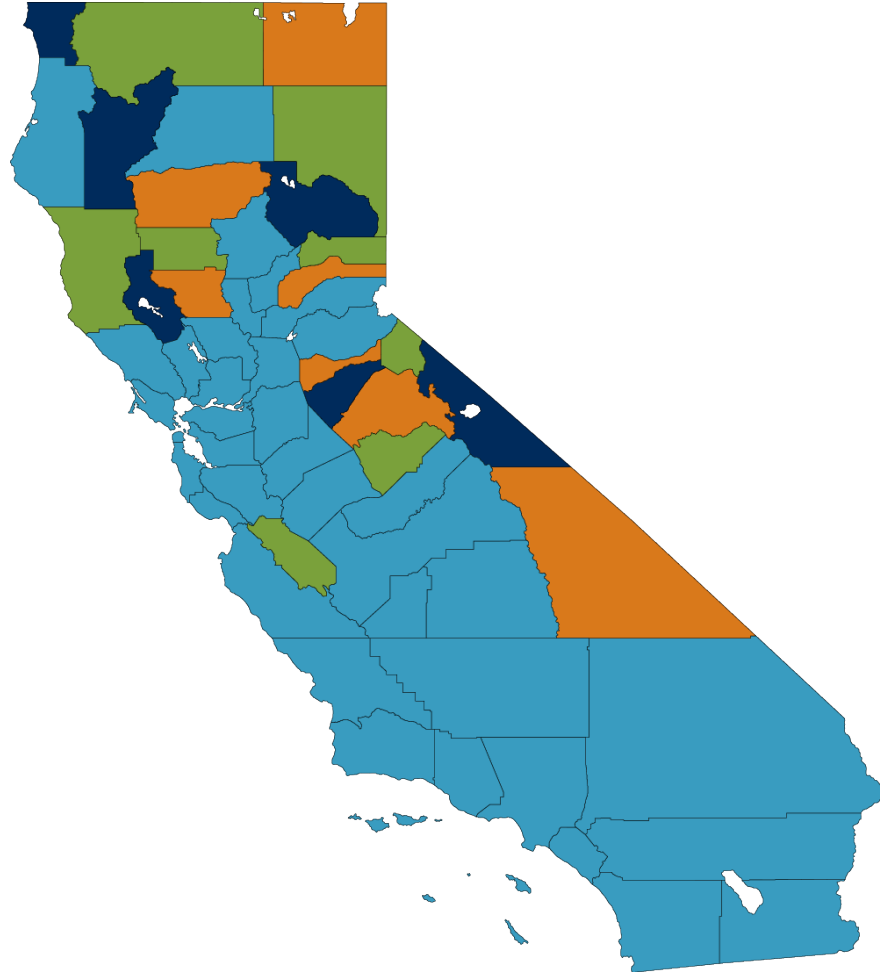
Small Population County Funding Augmentation Presentation (SPCFA)

First 5 California Commission Meeting
January 25, 2024

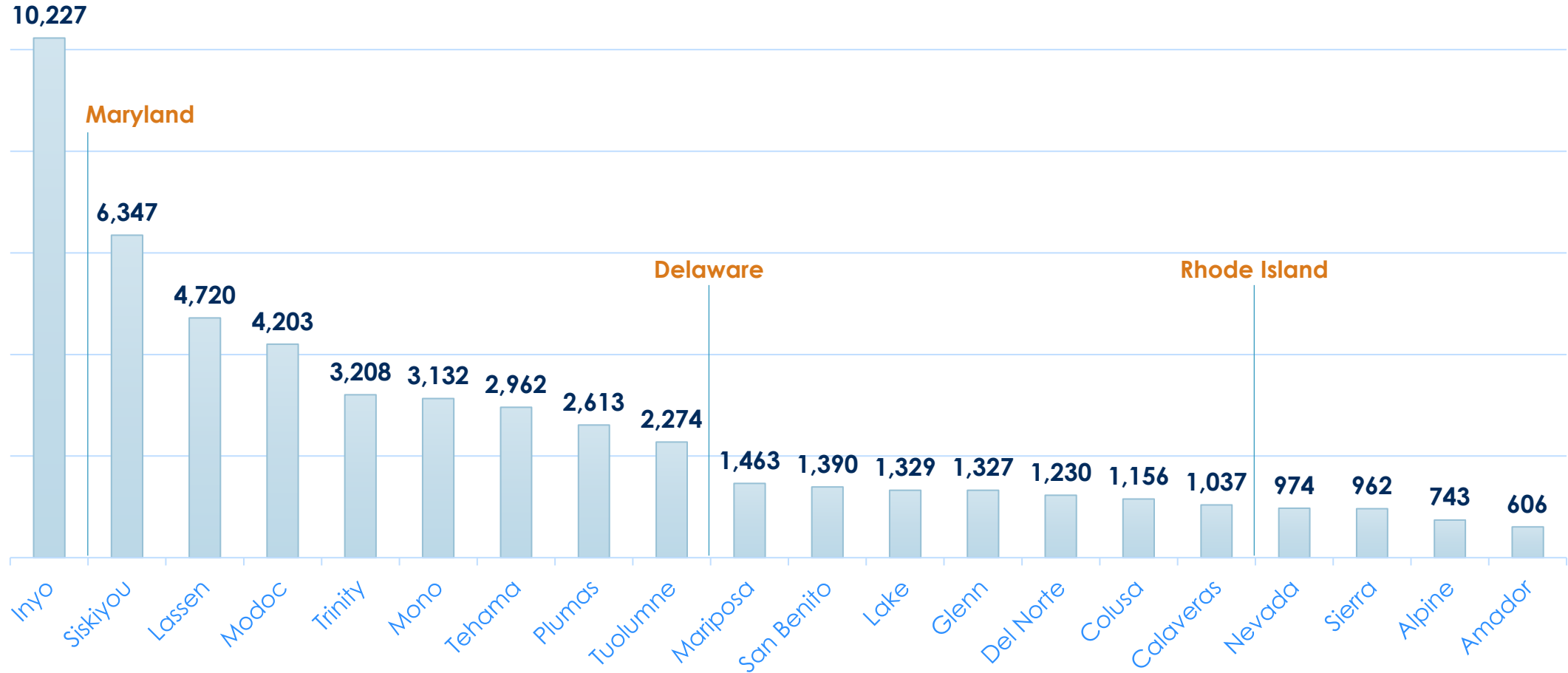


Geography of Small Population Counties

Representing over one-third of California's 58 counties



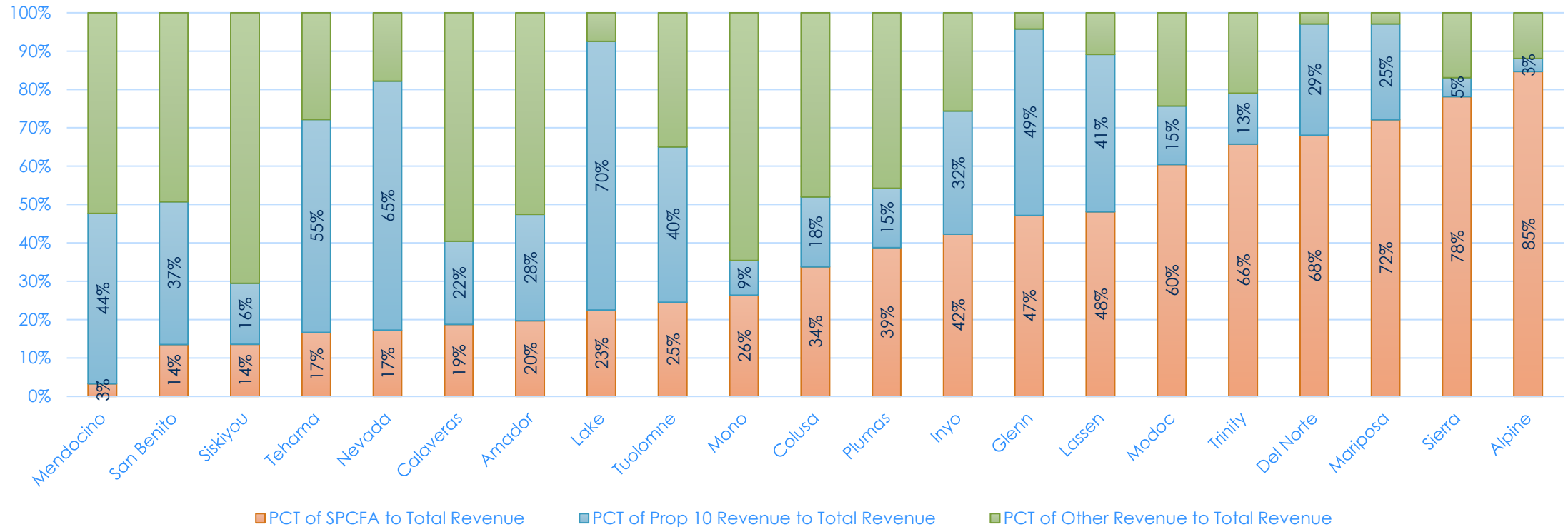
Geographic Area of Small Population Counties in Square Miles

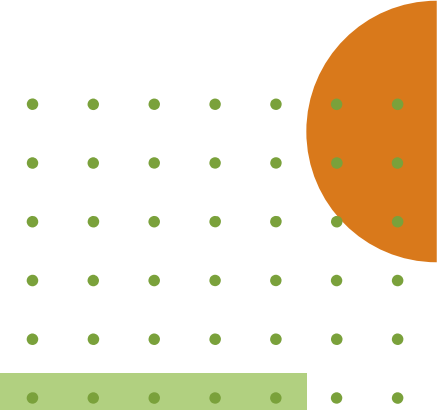


Augmentation Funding

- The proportion of augmentation vs. other funds vary across SPCs, from **3% to 85%**.
- Statewide, augmentation funds account for **28%** of all SPC revenue.

PCT of SPCFA Grant to Total Revenue by County FY21-22





Impact of Augmentation Funding

- **Existence**
- **Staffing**
- **Matching Funds**
- **Participation in Statewide F5CA Initiatives**
- **Braided Funding**



Recommendations to Improve SPCFA

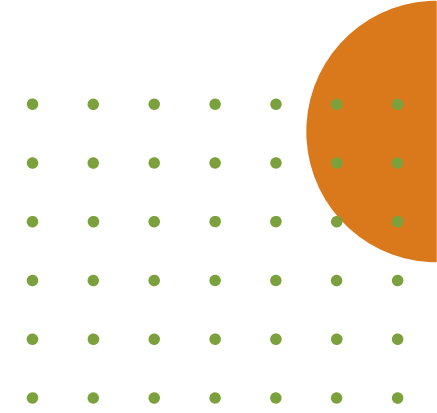
On November 17, 2023, twenty counties and the First 5 Association signed and shared a letter to the First 5 California Commission with the following recommendations to improve the SPCFA program. These recommendations have been discussed for nearly two years through the joint SPCFA Workgroup.

- 1. Provide SPCFA funds to counties as an allocation augmentation (like Proposition 10 allocation)** rather than a contractual/grant allocation. If needed, First 5 Association can provide resources to conduct a legal review of this recommendation
2. Treat SPCFA as **general operating support that aligns with the purpose of the funding** – to be used for overall operations and services of local First 5 Commissions
- 3. Provide funding in advance** of expenditures rather than in arrears. In the past, F5CA has paid 75% of SPCFA grant upfront
4. Accept **existing annual program and financial reporting from the counties to fulfill reporting requirements**
5. Execute SPCFA agreements for **multiple years** to ensure a predictable floor of funding for small counties

Paradigm Shift Augmentation Funding \neq Project Grant

Augmentation Funding should be a tool to:

- **Remove administrative burdens** on small counties with reduced capacity **so they can focus on community impact**
- **Remove redundant contract performance reporting** for small counties that **rely on SPCFA** for basic operations
- **Center equity** in funding that recognizes specific strengths and challenges of small counties





THANK YOU

